

## PT10SR-2511 Pressure Transmitter

### Features

- Range: 0kPa~700kPa...100MPa
- Integrated stainless steel construction, full-sealed
- Micro-fused technology, heat-resistant, anti-shock
- Compact structure and cost-efficient
- Wide working temperature range



### Application

- Engineering machinery
- Energy and water treatment systems
- Industrial process control and automatic detection system
- Pump or compressor
- Hydraulic and pneumatic systems
- Refrigeration system
- Central air conditioning control system

### Introduction

PT10SR-2511 pressure transmitter has the pressure chamber which is made of single complete stainless steel piece, and all-metal sealing structure. The transmitter uses micro-fusion technology and has specially designed structure. It adopts the overall digital calibration and temperature compensation

This transmitter can meet the OEM customers' large volume demand and is highly cost efficient. It can be widely used in air pressure, hydraulic, and even worse media measuring environment, such as sewage, steam, light corrosive gases and liquids and other industrial or civil field pressure monitoring. Special customized products for users are also available.

### Specifications

Pressure Range: 0kPa~700kPa...100MPa

Over pressure: 2×FS(max.150MPa);

Burst pressure: 5×FS(max.200MPa);

Power Supply: 8V~28V DC or 5V DC

Output signal: 4mA~20mA DC, 0.5V~4.5V DC

Accuracy: 1.0 rating

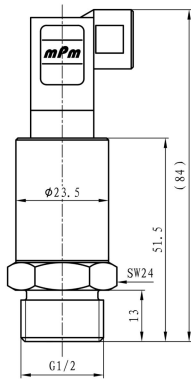
Compensation temperature: -10°C~80°C

Working temperature: -40°C~125°C

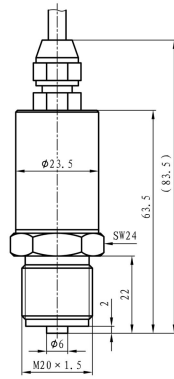
Storage Temperature: -40°C~125°C

Medium compatibility: all mediums that are compatible with 17-4PH stainless steel

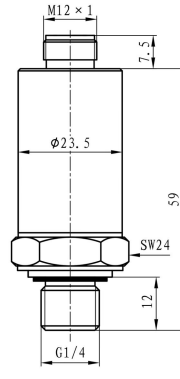
**Outline Construction**(Unit: mm)



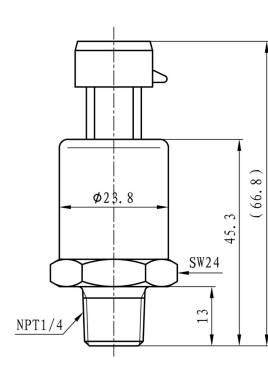
**B1 Type**



**B2 Type**



**B4 Type**



**B5 Type**

**Electrical Connection**

Definition	B1 Plug Type (Hirschmann(mini)Plug)		B2 Wire Color (Cable)		B4 Plug Type (M12×1 4-pin Plug)		B5 Plug Type (Packard Plug)	
			/					
	Current (2-wire)	Voltage (3-wire)	Current (2-wire)	Voltage (3-wire)	Current (2-wire)	Voltage (3-wire)	Current (2-wire)	Voltage (3-wire)
<b>+V</b>	1	1	Black	Black	1	1	+V	+V
<b>+OUT</b>	2	3	Red	Red	3	3	+OUT	+OUT
<b>GND</b>	Null	2	Null	Yellow (Blue)	Null	2	Null	

## Ordering Guide

PT10SR-2511	Pressure Transmitter			
	Range	0kPa~700kPa...100MPa		
	[0~X]kPa or MPa	X: Actual measured range		
		Code	Output signal	
		E	4mA~20mA DC	
		K	0.5V~4.5V DC	
			Code	Others
			B <sub>1</sub>	4-pin Plug ( Mini Hirschmann)
			B <sub>2</sub>	Cable
			B <sub>4</sub>	4-pin Plug (M12×1)
			B <sub>5</sub>	Packard Plug
			C <sub>1</sub>	M20X1.5 Male
			C <sub>2</sub>	G1/4 Male
			C <sub>3</sub>	G1/2 Male
			C <sub>6</sub>	NPT1/4 Male
			C <sub>16</sub>	G3/8 Male
PT10SR-2511	[0~1.6]MPa	E	B <sub>1</sub> C <sub>1</sub>	Whole Specs

## Notes

- 1.For code B2, the default cable length is 0.5 meter.
- 2.For pressure  $\geq 20$ MPa, only G1/2 and M20×1.5 male pressure connection are supplied.
- 3.Customized product is available upon the customers' requirements.